

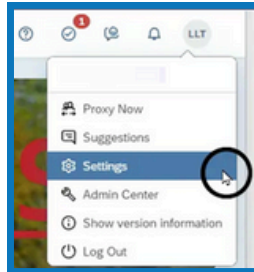


Accessibility refers to the ability of all users to access and interact with the application, including those who use assistive technologies. You can use these settings to optimize the application to suit your needs and preferences.

1

ACCESS SETTINGS

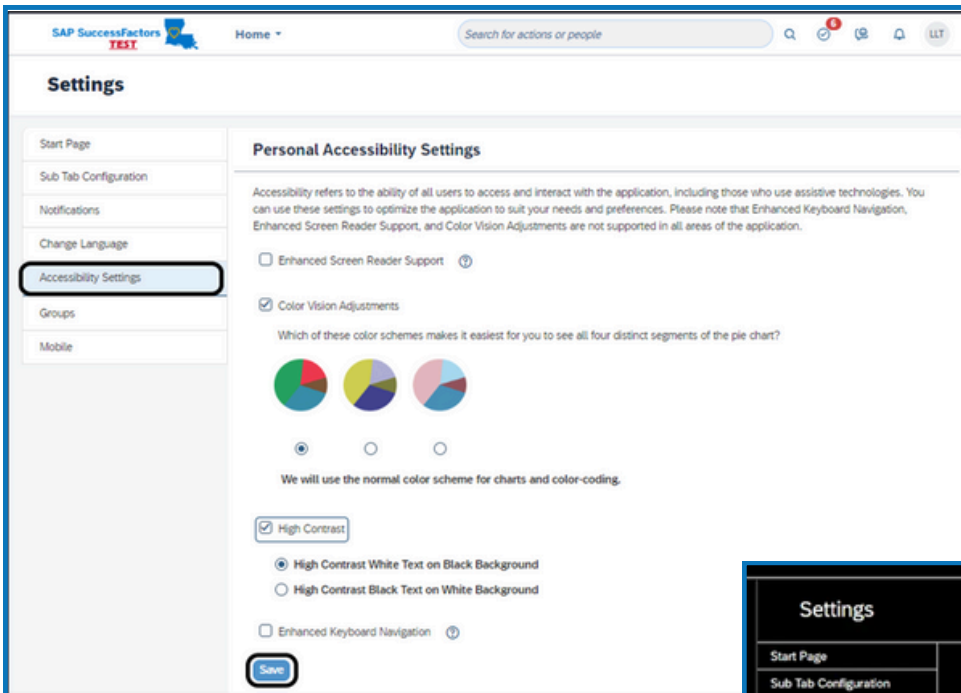
- Click on your User Icon.
- Click on "Settings."



2

EDIT ACCESSIBILITY SETTINGS

- Click "Accessibility Settings" to select support features, if necessary.
- Click "Save" after you have made your selections.
- NOTE: "Enhanced Keyboard Navigation," "Enhanced Screen Reader Support," and "Color Vision Adjustments" are not supported in all areas of the application.



! This is an example of High Contrast White Text on Black Background.

3

EXIT SETTINGS

Click on the "Home" menu or the SAP logo to exit settings.

